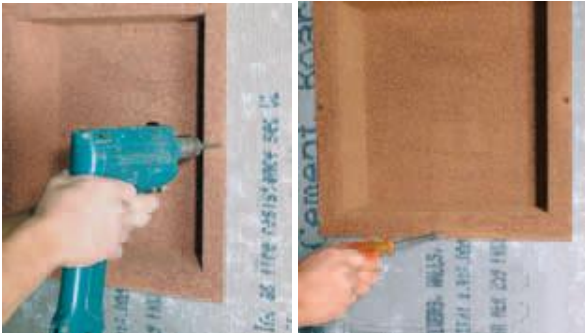


# Recessed Shower Niche Installation Instructions



## STEP 1

Place Recess-It unit level at desired location with flange facing out. When positioning the unit, be careful not to interfere with any structural wall framing members. Trace the perimeter of Recess-It on substrate and then place the unit aside. Enlarge marked layout by 5/8" on all sides and cut out substrate.



## STEP 2

Add a continuous bead of adhesive caulk along mounting flange, then secure to wall cavity using the supplied wall fasteners. (Galvanized roofing nails may be substituted.) Use a hand screwdriver or a power screwdriver on a low-resistance setting to tighten all fasteners. **DO NOT OVERTIGHTEN.**

**Important:** Thickness of Recess-It mounting flange should be minimized to provide a flush wall surface for the finish tile (or other finish surface material). In some cementitious substrates, you may be able to grind the perimeter of the cut-out for the width and depth of the mounting flange prior to installation; otherwise, install unit, and then use bonding material (thin-set/mastic) to **"feather"** the edge of the unit for a distance of 8"-12" and allow to set firm prior to continuing with finish tile placement.



## STEP 3

Finish as desired using bonding products suitable for finish surface material being applied. **Note:** All Recess-It products have a predetermined slope for the bottom surface. This may be reduced or enhanced by using a thicker bed of bonding material at the front or rear of horizontal plane as necessary. **Do not adjust slope to angle backward toward rear of unit.**

## OPTIONAL INSTALLATION

### FLOATING-SHELF

Place Floating Shelf directly on top edge of selected tile course. Apply surface bull-nose tile (SBN) or other finish material to top and bottom of Floating Shelf by using thin-set or mastic to "sandwich" shelf unit. Allow front edge of applied tiles to extend 1/8" minimum to allow for grout coverage of shelf.

